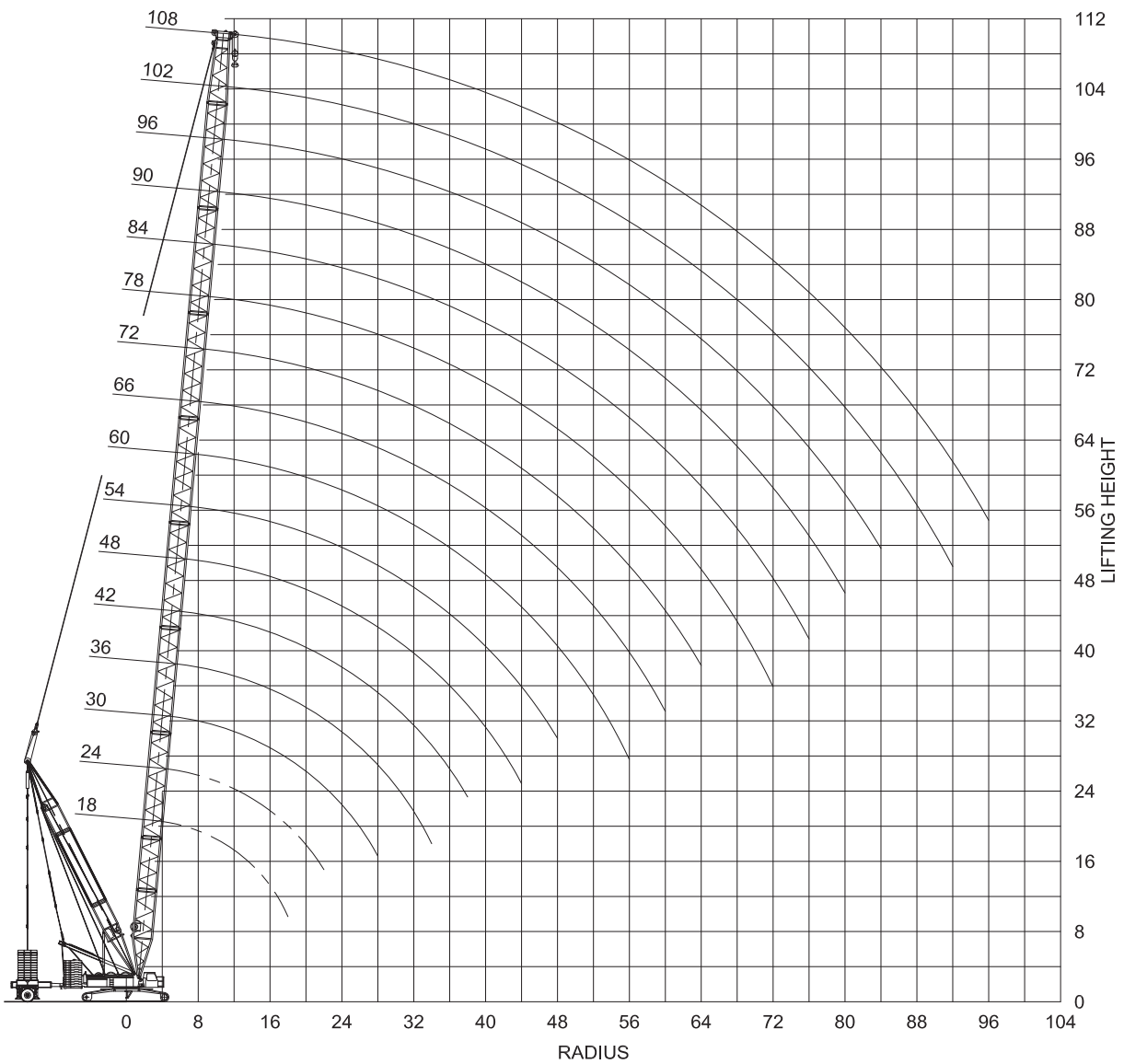


Dimensions are in millimeters.  
The content in this document is mentioned for reference use only. Values may differ from current data. Always contact Mammoet for current project calculations.



Dimensions are in meters.  
 The content in this document is mentioned for reference use only. Values may differ from current data. Always contact Mammoet for current project calculations.

**Main boom**

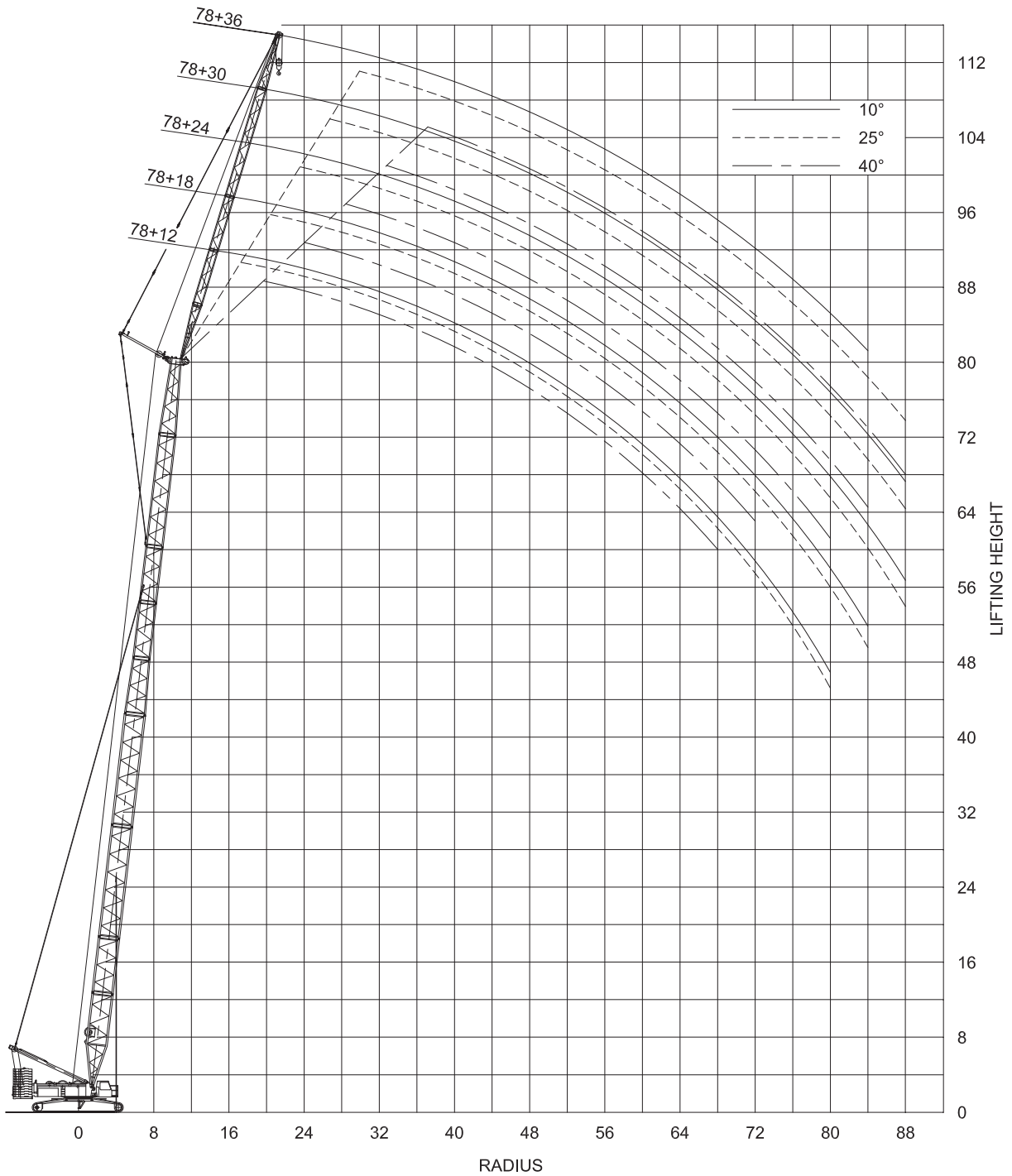
- Crawler base: 8.7×7.2 m
- Ballast: 125 t + 38 t

Boom length (m)	Ballast (t)	Radius (m)																																			
		5	6	7	8	9	10	11	12	14	16	18	20	22	24	26	28	30	32	34	36	38	40	42	44	46	48	50	54	58	62	66	70	74			
18	85	300	292	252	219	183	153	131	114	90	74	63																									
	105	300	283	263	231	206	175	150	131	104	86	73																									
24	85	300	291	240	201	173	151	131	114	90	74	63	54	47																							
	105	300	294	262	230	198	173	150	131	104	86	73	63	55																							
	125												148	118	97	83	71	63																			
30	85		265	218	185	160	141	126	113	90	74	62	53	46.5	41	36.5	33																				
	105		300	250	212	184	162	145	130	104	85	72	62	54	48	43	39																				
	125						183	163	148	117	97	82	71	62	55	49.5	44.5																				
36	85		239	200	171	149	132	118	107	89	73	62	53	46	40.5	36	32.5	29.2	26.6																		
	105		274	229	196	171	152	136	123	103	85	72	62	54	47.5	42.5	38	34.5	31.5																		
	125						172	154	140	117	96	81	70	62	55	49	44	40	36.5																		
42	85			185	160	140	125	112	102	85	73	61	52	45.5	40	35.5	32	28.6	25.9	23.6	21.6	19.9															
	105			212	184	161	144	129	117	99	85	71	61	53	47	42	37.5	34	31	28.3	26	24															
	125				207	182	163	146	133	112	96	81	70	61	54	48.5	43.5	39.5	36	33	30.5	28.2															
48	85				172	150	132	118	107	97	82	70	61	52	45	39.5	35	31.5	28.2	25.4	23.1	21	19.2	17.7	16.4	15											
	105				197	172	152	136	123	112	94	81	71	61	53	46.5	41.5	37	33.5	30.5	27.8	25.4	23.4	21.6	20.1	18.6											
	125				223	194	172	154	139	127	107	93	81	70	61	54	48	43	39	35.5	32.5	29.9	27.6	25.5	23.8	22.1											
54	85					141	125	112	101	92	78	67	58	51	44.5	39	34.5	31	27.6	24.9	22.5	20.4	18.6	17	15.7	14.3	13.2	12									
	105					162	144	129	117	107	90	78	68	60	53	46	41	36.5	33	29.9	27.2	24.8	22.7	20.9	19.4	17.8	16.6	15.3									
	125					183	162	146	133	121	103	89	78	69	60	53	47.5	42.5	38.5	35	32	29.2	26.9	24.8	23.1	21.4	20	18.6									
60	85						132	118	106	96	88	75	64	56	49.5	44	39	34.5	30.5	27.2	24.5	22.1	20	18.1	16.5	15.1	13.6	12.4	11.3	10.3							
	105						152	136	123	111	102	87	75	66	58	52	46	40.5	36.5	32.5	29.5	26.8	24.4	22.3	20.4	18.9	17.3	16	14.7	13.6							
	125						172	154	139	127	116	99	86	75	67	60	53	47	42	38	34.5	31.5	28.8	26.4	24.4	22.6	20.8	19.4	18	16.8							
66	85							112	101	92	84	72	62	54	47.5	42.5	38	34	30	26.8	24	21.6	19.5	17.6	16	14.5	13	11.8	10.6	9.6	7.8						
	105							129	117	107	98	83	72	63	56	50	45	40.5	36	32	29.1	26.3	23.9	21.8	19.9	18.3	16.7	15.3	14	12.8	10.8						
	125							146	133	121	111	95	83	73	65	58	52	46.5	42	37.5	34	31	28.3	26	23.8	22.1	20.3	18.9	17.4	16.1	13.8						
72	85								106	96	88	80	68	59	52	45.5	40.5	36.5	32.5	29.4	26.3	23.5	21.1	18.8	16.9	15.1	13.7	12.2	11	9.8	8.8	7	5.5	4.1			
	105								123	111	102	93	80	69	61	54	48	43.5	39	35.5	32	28.6	25.8	23.4	21.3	19.4	17.8	16.1	14.7	13.3	12.2	10.1	8.3	6.8			
	125								133	127	116	106	91	80	70	62	56	50	45.5	41.5	37	33.5	30.5	27.8	25.4	23.3	21.5	19.7	18.2	16.7	15.4	13.1	11.1	9.3			
78	85									92	84	77	65	57	49.5	43.5	39	34.5	31	27.9	25.2	22.6	20.1	17.9	15.9	14.2	12.7	11.2	10	8.8	7.8	6.1	4.7	3.3			
	105									106	97	89	77	67	58	52	46.5	41.5	37.5	34	31	28.1	25.3	22.9	20.6	18.6	16.9	15.3	13.9	12.5	11.3	9.3	7.5	6	4.6		
	125									118	111	102	88	76	67	60	54	48.5	44	40	36.5	33	30	27.3	24.9	22.8	20.9	19.1	17.6	16	14.7	12.3	10.3	8.6	7.1		
84	85										87	80	73	63	54	47.5	42	37	33	29.5	26.5	23.9	21.5	19	16.9	14.9	13.2	11.8	10.3	9.1	7.9	7	5.3	3.9			
	105										101	93	85	73	64	56	50	44.5	40	36	32.5	29.5	26.8	24.3	21.9	19.6	17.7	16	14.3	12.9	11.6	10.4	8.3	6.7	5.2	3.9	2.6
	125										103	101	98	84	74	65	58	52	46.5	42.5	38.5	35	32	29.4	26.8	24.3	22.1	20.2	18.3	16.8	15.2	13.9	11.6	9.6	7.8	6.3	5
90	105											89	82	71	61	54	48	42.5	38.5	34.5	31	28.2	25.6	23.3	21.2	19.3	17.5	15.8	14	12.6	11.2	10.1	7.9	6	4.5	3.1	
	125											91	90	81	71	63	56	50	45	40.5	37	33.5	31	28.2	25.9	23.8	21.7	19.9	18	16.4	14.8	13.4	11	8.9	7.1	5.6	4.3
96	125												78	76	69	61	54	48.5	43.5	39.5	36	32.5	29.8	27.3	25	22.9	21	19.1	17.3	15.8	14.2	12.8	10.4	8.3	6.5	5	3.6

t = metric tons.

The content in this document is mentioned for reference use only. Values may differ from current data. Always contact Mammoet for current project calculations.





Dimensions are in meters.  
The content in this document is mentioned for reference use only. Values may differ from current data. Always contact Mammoet for current project calculations.

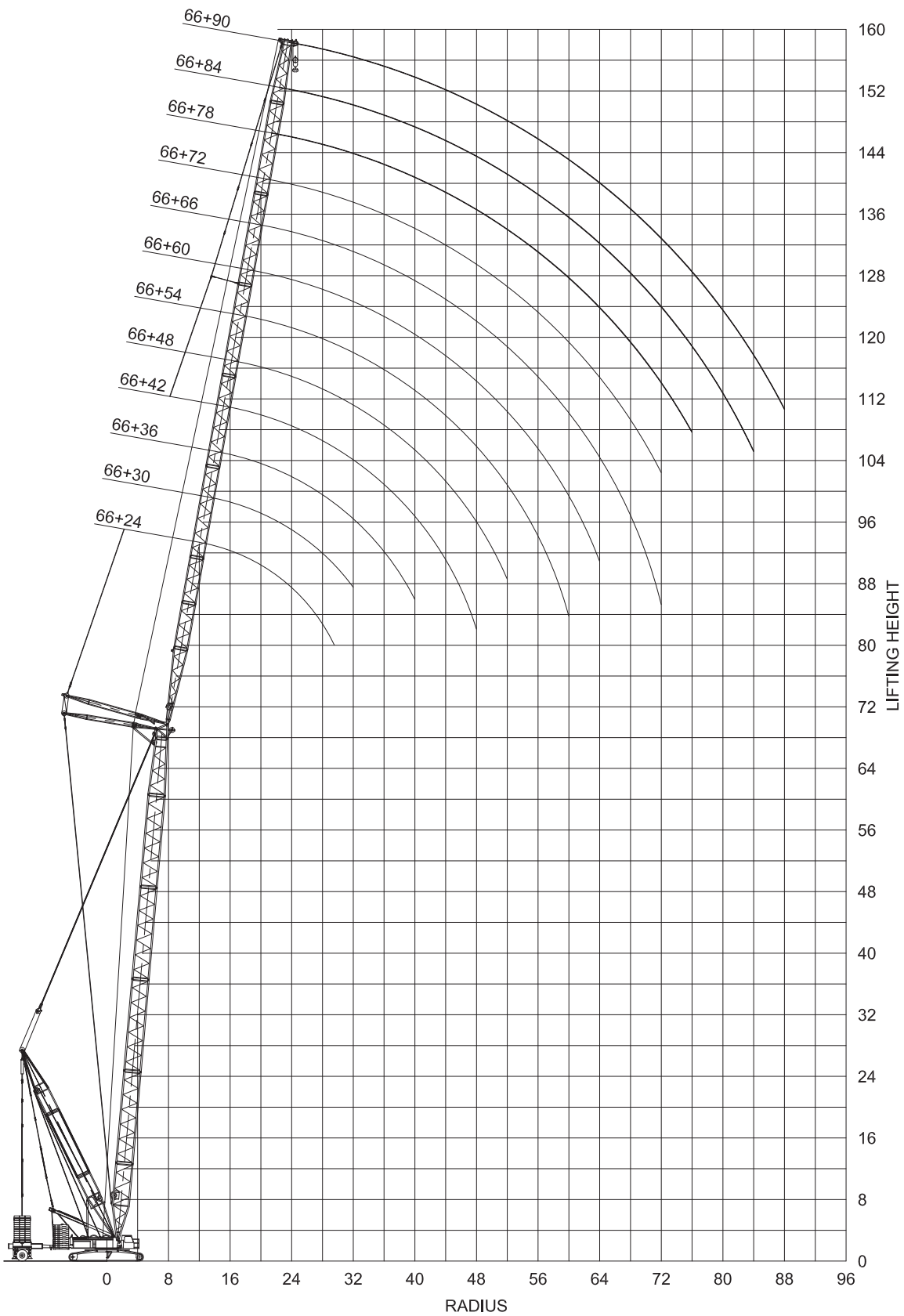
**SL2F Main boom with fixed jib**

- Crawler base: 8.7×7.2 m
- Ballast: 125 - 45 t + 38 - 8 t

Boom length (m)	Jib length (m)	Radius (m)																													
		10	11	12	14	16	18	20	22	24	26	28	30	32	34	36	38	40	42	44	46	48	50	54	58	62	66	70	74	76	
36	12	60	60	60	60	60	58	51	44.5	39.5	35	31.5	28.7	26.1	23.8	21.9	20.1	18.6	17.3	15.9											
	18		60	60	58	54	51	47.5	44	39.5	35.5	32	28.8	26.2	24	22	20.3	18.7	17.4	16	14.9	13.9									
	24				47.5	44.5	41	38	35	32.5	30.5	28.4	26.6	25.1	23.9	22.2	20.4	18.9	17.6	16.2	15.1	14	13.1	11.3							
	30					37	35	32.5	29.8	27.7	25.8	24.1	22.5	20.9	19.7	18.7	17.7	16.9	16.1	15.2	14.4	13.7	12.9	11.3	9.8						
	36						25.8	25.3	25	24.4	23.6	22.7	21.5	20	18.7	17.4	16.2	15.3	14.5	13.8	13.1	12.4	11.7	11.1	10.1	9.3	8.3				
42	12	60	60	60	60	60	56	49.5	44	39	34.5	31	28.1	25.5	23.2	21.3	19.5	18	16.6	15.3	14.2	13.1									
	18			59	55	51	48	45.5	43	39	35	31.5	28.3	25.7	23.4	21.4	19.7	18.1	16.8	15.4	14.3	13.2	12.3								
	24				44.5	42	39	37	35	33	31.5	29.9	28.3	25.9	23.6	21.6	19.9	18.3	16.9	15.6	14.5	13.4	12.4	10.7	9.2						
	30					35	33	31.5	29.7	28.1	26.7	25.3	23.8	22.4	21	19.8	18.8	18	16.8	15.6	14.4	13.3	12.3	10.6	9	7.7					
	36						25.6	25	24.3	23.3	22.5	21.4	20.5	19.5	18.5	17.4	16.3	15.4	14.7	14	13.3	12.7	12	10.5	8.9	7.6	6.5	5.5			
48	12		60	60	60	60	53	47.5	42.5	38	34	30.5	27.6	25	22.7	20.8	19	17.4	16.1	14.7	13.6	12.5	11.6								
	18				58	55	52	46.5	41.5	37.5	34	30.5	27.8	25.2	22.9	20.9	19.1	17.6	16.3	14.9	13.8	12.7	11.8	9.9	8.4						
	24					47	44.5	42	40	38	36.5	33.5	30.5	27.7	25.4	23.2	21.1	19.4	17.8	16.4	15	13.8	12.7	11.7	9.9	8.4	7.1				
	30						35.5	34.5	33	31.5	30.5	29	27.8	26.6	24.8	22.8	21	19.3	17.6	16.2	14.8	13.7	12.5	11.5	9.7	8.2	6.9	5.8	4.8		
	36							24.9	24.3	23.5	22.6	21.9	21.2	20.6	20.1	19.5	19.1	18.6	17.6	16.2	14.8	13.6	12.4	11.4	9.7	8.1	6.8	5.8	4.8	4	3.5
54	12			60	60	60	58	51	45.5	40.5	36.5	33	29.7	26.7	24.1	21.8	19.8	18	16.4	15.1	13.7	12.6	11.5	10.6	8.9	7.5					
	18				55	52	49	44.5	39.5	35.5	32	29.2	26.7	24.4	22.3	20.3	18.4	16.8	15.4	14	12.8	11.7	10.8	9.1	7.6	6.3					
	24					41.5	39.5	37.5	36	34.5	32	28.9	26.4	24.1	22.1	20.3	18.5	16.9	15.5	14.1	12.9	11.8	10.8	9.1	7.5	6.3	5.3				
	30						34	33	31.5	30	28.8	27.6	26.4	25.4	23.9	22	20.2	18.6	17	15.6	14.1	12.9	11.8	10.8	9.1	7.5	6.3	5.3	4.3	3.5	3
	36							24.9	23.9	23	22.2	21.5	20.9	20.3	19.8	19.3	18.6	18	16.7	15.4	14.2	13.1	12	11.1	9.3	7.7	6.3	5.3	4.2	3.3	2.9
60	12			60	60	56	49	43.5	39	35	31.5	28.6	26	23.7	21.6	19.6	17.8	16.2	14.8	13.4	12.3	11.2	10.3	8.5	7	5.8					
	18				49.5	46.5	44	42	38.5	34.5	31	28.3	25.8	23.6	21.6	19.7	17.9	16.3	14.9	13.5	12.3	11.2	10.3	8.6	7.1	5.9	4.9				
	24					38	35.5	34	32.5	31	29.4	27.8	25.3	23.1	21.1	19.3	17.8	16.2	14.8	13.3	12.2	11.1	10.2	8.4	6.9	5.7	4.8	3.8			
	30						29.9	28.4	27.1	26	24.8	23.8	22.8	21.8	21	19.2	17.7	16.2	14.9	13.7	12.7	11.6	10.6	8.8	7.2	6	4.9	3.9			
66	12			60	56	52	47	41.5	37	33	29.9	27	24.5	22.3	20.3	18.5	16.7	15.1	13.7	12.3	11.2	10.1	9.2	7.5	6.1	5	4				
	18				44	41.5	39	37	35	33	29.7	26.9	24.4	22.2	20.3	18.5	16.9	15.2	13.8	12.5	11.3	10.2	9.3	7.6	6.2	5	4				
	24					34	32	30.5	28.7	27.3	26	24.8	23.7	22.1	20.2	18.5	16.9	15.5	14.3	13	11.9	10.8	9.8	8.1	6.5	5.3	4.3				
72	12				55	51	45	40	35.5	31.5	28.5	25.7	23.2	21.1	19.1	17.4	15.7	14.1	12.8	11.4	10.3	9.2	8.3	6.7	5.3	4.2					
	18					41	39.5	37.5	35	31.5	28.4	25.6	23.2	21.1	19.1	17.4	15.9	14.5	13.3	12	10.9	9.9	8.9	7.2	5.8	4.6	3.5				

t = metric tons.

The content in this document is mentioned for reference use only. Values may differ from current data. Always contact Mammoet for current project calculations.



Dimensions are in meters.  
 The content in this document is mentioned for reference use only. Values may differ from current data. Always contact Mammoet for current project calculations.

### Main boom with luffing jib

- Crawler base: 8.7×7.2 m
- Ballast: 125 - 45 t + 38 - 8 t
- Boom angle: 87°, 77°, 67°

Boom length (m)	Jib length (m)	Radius (m)																												
		12	14	16	18	20	22	24	26	28	30	32	34	36	38	42	46	50	54	58	62	66	70	74	78	82	86	90		
30	24	129	111	97	86	78	69	62	55																					
	30		107	94	84	75	68	62	55	50	46	42.5																		
	36			103	90	81	73	66	60	55	50	46	42	39	36	33.5														
	42				87	78	70	64	58	54	49.5	45.5	41.5	38.5	35.5	33	29.1													
	48					75	68	62	57	52	48	45	41.5	38.5	35.5	33	28.7	25.4												
	54						73	66	60	55	50	46.5	43.5	40.5	37.5	35	32.5	28.5	24.9	22.1	19.8									
	60							64	58	53	49	45	42	39	36.5	34	32	28	24.6	21.8	19.4	17.4								
	66								55	51	47.5	43.5	40.5	37.5	35	33	31	27.4	24.3	21.4	19	16.9	15.2	13.7						
	72									46.5	45.5	42.5	39	36.5	34	32	29.8	26.3	23.4	20.9	18.6	16.6	14.8	13.1	11.7					
	78										40.5	40	40	38	35.5	33	30.5	28.7	25.4	22.5	20.1	17.9	16	14.3	12.6	11	9.6	8.5		
84											34	33.5	33	32.5	31.5	29.6	27.7	24.4	21.6	19.1	17	15.2	13.4	11.8	10.4	9	7.8	7		
90												29.3	29	28.8	28.5	28.3	27	23.8	20.9	18.5	16.4	14.7	13	11.4	10.1	8.8	7.7	6.6	5.8	5
36	24	123	106	94	83	75	68	62	55																					
	30		103	90	81	73	66	61	55	50	46	42																		
	36			99	87	78	70	64	59	54	50	46	42	39	36	33.5														
	42				84	75	68	62	57	52	48	45	41.5	38.5	35.5	33	29.1													
	48					73	66	60	55	50	46.5	43.5	40.5	38	35.5	33	28.6	25.3												
	54						63	58	53	49	45	42	39	36.5	34	32	28.2	24.9	22	19.6										
	60							59	56	52	47.5	44	41	38	35.5	33.5	31.5	27.9	24.6	21.9	19.5	17.4								
	66								50	49.5	45.5	42	39	36.5	34	32	29.9	26.5	23.6	21.1	18.9	16.9	15	13.4						
	72									43	42.5	41.5	38.5	35.5	33.5	31	29.2	25.9	23	20.6	18.4	16.6	14.8	13	11.6					
	78										37	37	36.5	34	32	29.7	27.8	24.6	21.7	19.3	17.3	15.4	13.8	12.2	10.7	9.3	8.2			
84											31.5	31	31	30.5	30	28.6	26.7	23.5	20.8	18.4	16.4	14.6	13	11.4	10	8.7	7.5	6.7		
90												27.3	27	26.8	26.5	26.3	26.1	22.9	20.1	17.9	15.8	14.1	12.5	11.1	9.7	8.4	7.3	6.3	5.5	4.8
42	24	118	102	90	81	73	66	61	55	50																				
	30		98	87	78	70	64	59	54	50	46	42	39																	
	36			84	75	68	62	57	52	48.5	45.5	42	39	36	33.5															
	42				81	73	66	60	55	51	47	43.5	41	38	35.5	33	29.1													
	48					70	64	58	53	49	45.5	42.5	39.5	37	34.5	32.5	28.6	25.3	22.4											
	54						60	56	51	47	43.5	40.5	37.5	35.5	33	31	27.8	24.6	21.9	19.5										
	60							52	50	46	42.5	39.5	37	34.5	32.5	30.5	26.9	24.1	21.6	19.3	17.3	15.4								
	66								45.5	44.5	44	41	38.5	35.5	33.5	31	29.3	26	23.2	20.8	18.8	16.8	14.9	13.3						
	72									39	38.5	38	37	34.5	32	30	28.2	25	22.2	19.8	17.8	16.1	14.3	12.6	11.1	9.8				
	78										34	33.5	33	32	30.5	28.6	26.8	23.6	20.9	18.6	16.6	14.8	13.3	11.7	10.2	8.8	7.8			
84											29.2	28.9	28.5	28.2	27.8	27.4	26.3	23.1	20.4	18.1	16.1	14.4	12.8	11.4	10	8.7	7.5	6.5	5.8	
90												25.3	25.1	24.8	24.5	24.1	23.8	21.9	19.4	17.1	15.2	13.5	11.9	10.5	9.2	8.1	7	6	5.2	4.5
48	24	108	98	87	78	70	64	59	55	50																				
	30		94	84	75	68	62	57	53	49	45.5	42	39																	
	36			80	73	66	60	55	51	47.5	44	41.5	39	36	33.5															
	42				71	69	64	58	53	49.5	45.5	42.5	40	37.5	35	33	29.1													
	48					61	59	56	52	47.5	44.5	41	38.5	36	34	32	28.4	25.4	22.5											
	54						53	51	49.5	46	42.5	39.5	37	34.5	32.5	30.5	27.1	24.3	21.8	19.6										
	60							45.5	44.5	43.5	41	38	35.5	33	31	29.3	26	23.3	20.9	18.9	16.9	15.1								
	66								40.5	40	39	38	37	34.5	32	30	28.3	25.1	22.4	20.1	18.1	16.2	14.4	12.8						
	72									35	34.5	33.5	33	32	31	29	27.2	24.1	21.4	19.1	17.1	15.4	13.8	12.1	10.7	9.4				
	78										30	29.7	29.1	28.5	27.9	27.3	25.8	22.8	20.1	17.9	15.9	14.2	12.7	11.2	9.7	8.4	7.5			
84											26.1	25.7	25.2	24.7	24.3	23.7	22	19.7	17.4	15.5	13.8	12.3	10.9	9.6	8.3	7.2	6.3	5.5		
90												22.7	22.4	22.1	21.7	21.3	20.9	20	18.4	16.4	14.5	12.8	11.4	9.9	8.7	7.6	6.6	5.7	4.8	4.2

t = metric tons.

The content in this document is mentioned for reference use only. Values may differ from current data. Always contact Mammoet for current project calculations.



Boom length (m)	Jib length (m)	Radius (m)																										
		12	14	16	18	20	22	24	26	28	30	32	34	36	38	42	46	50	54	58	62	66	70	74	78	82	86	90
54	24	94	92	84	75	68	62	57	53	49.5																		
	30		82	78	72	66	60	55	51	47.5	44.5	41.5	39															
	36			70	67	64	58	54	49.5	46	43	40	38	35.5	33.5													
	42				61	58	56	51	47.5	44	41	38.5	36	34	32	28.5												
	48				54	53	51	49	46	42.5	40	37	35	32.5	31	27.6	24.9	22.3										
	54					46.5	45	43.5	42.5	40.5	38	35.5	33	31	29.3	26.1	23.4	21.1	19									
	60						40.5	39.5	38.5	37	36	34.5	32.5	30.5	28.6	25.6	22.9	20.6	18.6	16.7	14.8							
	66							35	34	33.5	32.5	31.5	30.5	29	27.2	24.1	21.5	19.3	17.3	15.6	13.9	12.3						
60	24		80	75	70	66	60	55	51	48																		
	30			71	68	64	60	57	53	49.5	46	43	40.5	38														
	36				61	59	56	53	50	47.5	44.5	42	39	37	34.5	33												
	42					53	51	49	46.5	44	42	40	37.5	35	33	31	28.1											

t = metric tons.

The content in this document is mentioned for reference use only. Values may differ from current data. Always contact Mammoet for current project calculations.

**Main boom with luffing jib and derrick**

- Crawler base: 8.7×7.2 m
- Ballast: 85 t + 8 t
- Boom angle: 87°, 77°, 67°, 47°

Boom length (m)	Jib length (m)	Radius (m)																											
		11	12	14	16	18	20	22	24	26	28	30	34	38	42	46	50	54	58	62	66	70	74	78	82	86	90		
30	24	190	183	171	160	150	135	119	103	88																			
	30			152	145	138	130	119	106	96	87	77																	
	36			130	125	121	117	112	106	96	87	80	66	52															
	42				106	103	100	98	95	91	86	80	67	56	44.8														
	48					90	89	87	86	85	83	79	68	58	49.8	41.5													
	54						77	76	75	73	72	71	70	67	58	50.5	43.8	37.3	30.3										
	60							65	64	63	63	62	61	60	57	50.5	44.3	38.8	33.5	28.5									
	66								55	54	54	53	52	51	49.5	47.5	43.5	38.8	34.3	29.9	25.9	21.1							
	72									46.5	46	45.5	45	44	43	41.8	40.5	38.3	34.8	31.1	27.3	23.6	20.1						
	78										41	40.5	40	39.5	38.5	38	37	36	35	33.3	30.4	27.3	24.1	21	18.1	14.4			
84											34	33.5	33	32	31	30.1	29.1	28	26.9	25.8	24.6	23.1	21.1	18.7	16.1	13.5			
90												29.4	29	28.3	27.7	27.1	26.6	25.9	25.3	24.6	23.9	22.9	21.1	18.8	16.6	14.5	12.4	9.7	
36	24	173	168	158	149	140	131	121	106	90																			
	30			139	132	126	120	113	105	97	88	78																	
	36			120	116	112	109	105	101	96	90	82	67	53															
	42				98	95	93	91	89	86	83	79	69	57	46														
	48					83	82	81	79	78	77	74	67	59	50	42													
	54						70	69	68	68	67	66	63	56	50.3	44.3	37.8	30.9											
	60							60	59	59	58	57	57	55	53	48.3	43	38.3	33.8	29.1									
	66								51	51	50	49.5	49	48.5	47	46	43.8	39.8	35	30.3	26.1	21.4							
	72									43.5	43	42.5	42	41	40.5	39	37.8	36.5	34.5	31.2	27.5	23.9	20.4						
	78										37.5	37	37	36	35.5	35	34	33.3	32	29.6	26.8	24	21.1	18.2	14.8				
84											32	31.5	31	30	29.2	28.4	27.4	26.4	25.4	24.4	23.4	21.9	20.1	18	15.9	13.6			
90												27.6	27.2	26.7	26.2	25.7	25.2	24.5	23.8	23.1	22.3	21	19.1	17	15.1	13.2	11.3	9.3	
42	24		146	139	133	126	120	111	102	92	72																		
	30			123	119	115	110	105	100	94	88	80	56																
	36				104	101	99	96	92	88	83	78	67	54															
	42					90	87	85	83	82	79	77	74	65	57	47													
	48						77	75	74	73	71	70	68	62	55	49	42.3	32.9											
	54							65	64	63	62	62	61	57	52	46	41.3	36.8	31.2										
	60								55	54	53	53	52	51	49	46.5	43	38.8	34	29.1	22.8								
	66									47	47	46.5	46	45.5	45	44	42.3	40	36.8	33.3	29.8	26.1	21.6						
	72										40.5	40	39.5	39	38.5	37.5	36.3	35	33.8	31.5	28.7	26.1	23.4	20.4	15.8				
	78											35	34.5	34	33.5	33	32.5	31.5	30.5	29.1	26.9	24.4	21.9	19.7	17.6	14.7			
84												29.9	29.4	28.9	28.1	27.3	26.6	25.8	24.8	23.9	23	22	20.5	18.6	16.6	14.7	12.8	10.1	
90													25.8	25.5	24.9	24.3	23.9	23.4	22.8	22.1	21.4	20.6	19.2	17.3	15.4	13.6	11.9	10.3	8.8
48	24		130	124	118	112	106	101	96	91	77																		
	30			108	104	100	96	92	88	84	80	75	59																
	36				92	89	86	83	80	77	74	70	62	55															
	42					81	78	76	74	72	70	68	65	59	53	46.3													
	48						69	67	66	64	63	61	59	55	50	44.5	39.8	33											
	54							59	58	57	56	55	54	51	48	45	41.5	37.5	32.4										
	60								50	49.5	48.5	48	47.5	46	43.5	41	38.5	35.5	32.3	28.8	23.4								
	66									44	43	42.5	42.5	42	41	39.5	37.5	35.5	33.3	30.4	27.5	24.9	21.8						
	72										37.5	37	36.5	36	35.5	34.5	33.5	32.3	30.6	28.6	26.1	23.6	21.3	19.1	15.8				
	78											32.5	32	31.5	31	30.5	29.7	28.9	27.7	26.2	24.1	21.9	19.8	17.7	15.8	14			
84												27.2	26.8	26.1	25.4	24.8	24	23.1	22.3	21.4	20.3	18.6	16.7	14.9	13.2	11.5	9.7		
90													23.6	23.3	22.8	22.3	21.9	21.4	20.9	20.3	19.6	18.7	17.2	15.4	13.8	12.1	10.6	9.1	7.8

t = metric tons.

The content in this document is mentioned for reference use only. Values may differ from current data. Always contact Mammoet for current project calculations.

Boom length (m)	Jib length (m)	Radius (m)																													
		11	12	14	16	18	20	22	24	26	28	30	34	38	42	46	50	54	58	62	66	70	74	78	82	86	90				
54	24		108	108	103	98	93	88	84	80	77																				
	30			95	91	88	85	81	77	73	70	67	60																		
	36				80	77	75	73	70	67	64	62	57	50																	
	42					69	67	65	64	62	59	57	53	48	43																
	48						61	59	58	56	55	54	52	48.5	45.5	42.3	39	33.8													
	54							53	51	50	49	48	47	44.5	42	39.3	36.8	34	30.9												
	60								45.5	44.5	43.5	43	42	40.5	38.5	36.5	34.5	32	29.1	26.4	22.9										
	66									39.5	38.5	38	37.5	36	35	33	31.3	29.6	27.4	24.9	22.4	20.1									
	72										34	33.5	33	32.5	32	31	29.6	28.1	26.9	25.3	23.3	21.1	19	17.1	15						
	78											29.8	29.5	29.1	28.4	27.7	26.9	25.8	24.6	23.4	21.8	19.9	17.9	16.1	14.3	12.7					
84												25.1	24.7	24	23.4	22.8	22.1	21.4	20.5	19.6	18.3	16.6	14.8	13.3	11.8	10.3	8.8				
90													21.7	21.1	20.7	20.2	19.8	19.1	18.4	17.7	16.6	15.2	13.6	12.1	10.7	9.3	8	6.8			
60	24			95	91	87	83	79	75	71	68	60	55																		
	30				84	81	78	75	72	68	65	62																			
	36					72	69	67	65	62	60	57	55	51	46																
	42						61	59	58	56	55	53	51	47	43.5	40.5															
	48							53	52	50	49	48	46.5	43.5	40.5	37.8	35.3	32.5													
	54								47	46	45	44	43	42	39.5	37	34.8	32.5	30.3	27.8											
	60									41	40	39	38.5	37.5	36	34	32	30.2	28.4	26.3	23.9	21.8									
	66										35	34.5	34	33	32	30.5	29	27.4	25.9	24.3	22.3	20.1	18.1								
	72											30.5	30	29.6	28.7	27.8	26.6	25.3	24	22.6	21	19.1	17.2	15.4	13.8						
	78												27	26.4	25.9	25.1	24.3	23.5	22.4	21.4	20.3	19.1	17.5	15.8	14.1	12.6	11.1				
84													22.8	22.4	21.8	21.2	20.6	19.9	19	18.1	17.1	16	14.5	12.9	11.5	10.1	8.8	7.5			
90														19.7	19.1	18.5	18.1	17.5	16.8	16	15.2	14.3	13.2	11.8	10.4	9.2	8	6.8	5.7		
66	24				83	79	76	73	69	66	63	60																			
	30					71	68	65	63	60	57	55	53	49																	
	36						63	61	59	57	55	53	51	49	45	41.5															
	42							55	53	51	50	48.5	46.5	45	41.5	38.5	35.8														
	48								46.5	45.5	44	43	42	41	38	35.5	33.3	30.9	28.7												
	54									42	41	40	39	38	37	35	33	30.9	28.8	26.9	24.9										
	60										36.5	35.5	34.5	34	33	32	29.9	28.1	26.4	24.8	23.1	21.3	19.4								
	66											31.5	30.5	29.9	29.3	28.2	27.1	25.5	24	22.6	21.1	19.6	17.8	16.1							
	72												27.3	26.7	26.1	25.2	24.3	23.2	21.9	20.6	19.6	18.3	16.8	15.1	13.5	12					
	78													24	23.5	23	22.1	21.4	20.6	19.6	18.6	17.6	16.6	15.3	13.8	12.3	10.8	9.4			
84														20.4	20	19.2	18.6	18	17.3	16.4	15.6	14.7	13.8	12.6	11.2	9.9	8.7	7.5	6.4		
90															17.4	16.7	16.1	15.6	15	14.3	13.6	12.8	12.1	11.2	10.1	8.9	7.8	6.7	5.7	4.7	
72	24					72	69	67	64	61	58	56	53																		
	30						62	60	58	55	53	51	48.5	46.5	43																
	36							56	54	52	50	48.5	46.5	44.5	43	39.5	36.5														
	42								48	46.5	45	44	42.5	41	39.5	36.5	34	31.3													
	48									42	40.5	39.5	38.5	37.5	36	33.5	31.5	29	27.1	25.1											
	54										36	35	34	33	32.5	30.5	28.4	26.6	24.8	23.1	21.6										
	60											32	31.5	30.5	29.7	29	27.8	26.1	24.4	22.9	21.4	19.9	18.5	17							
	66												27.7	27	26.4	25.8	24.7	23.6	22.1	20.8	19.5	18.3	17	15.7	14.3						
	72													24.1	23.5	23	22	21.2	20.1	18.9	17.8	16.7	15.7	14.5	13.2	11.8	10.4				
	78														20.6	20.1	19.3	18.5	17.7	16.8	15.8	14.8	13.8	12.9	11.8	10.6	9.3	8.1			
84															17.9	17.5	16.7	16.1	15.5	14.8	13.9	12.9	12.1	11.3	10.4	9.4	8.3	7.3	6.3	5.3	
78	30						54	52	51	48.5	46.5	44.5	42.5	41	37.5																
	36							47	45.5	44	42.5	41	39	37.5	34.5	32															
	42								42.5	41	39.5	38.5	37.5	36	34.5	32	29.4	27.1	24.9												
	48									36.5	35.5	34.5	33.5	32.5	31.5	29.1	27	25	23.1	21.4											
	54										31.5	30.5	29.6	28.9	28.1	26.5	24.5	22.8	21.1	19.4	17.9	16.4									
	60											27.4	26.6	25.9	25.3	24.1	22.6	21.1	19.6	18.3	16.9	15.7	14.6								
	66												24.3	23.6	23	22.4	21.4	20.4	19.1	17.8	16.6	15.4	14.3	13.3	12.2	10.9					
	72													20.9	20.4	19.8	18.9	18.1	17.1	15.9	14.9	13.9	12.9	11.9	11	9.9	8.7				
	78														17.6	17.2	16.4	15.6	14.9	14	13	12.1	11.2	10.4	9.6	8.8	7.8	6.7	5.7		
	84	42																													
48																															
54																															
60																															
66																															
72																															

t = metric tons.

The content in this document is mentioned for reference use only. Values may differ from current data. Always contact Mammoet for current project calculations.