

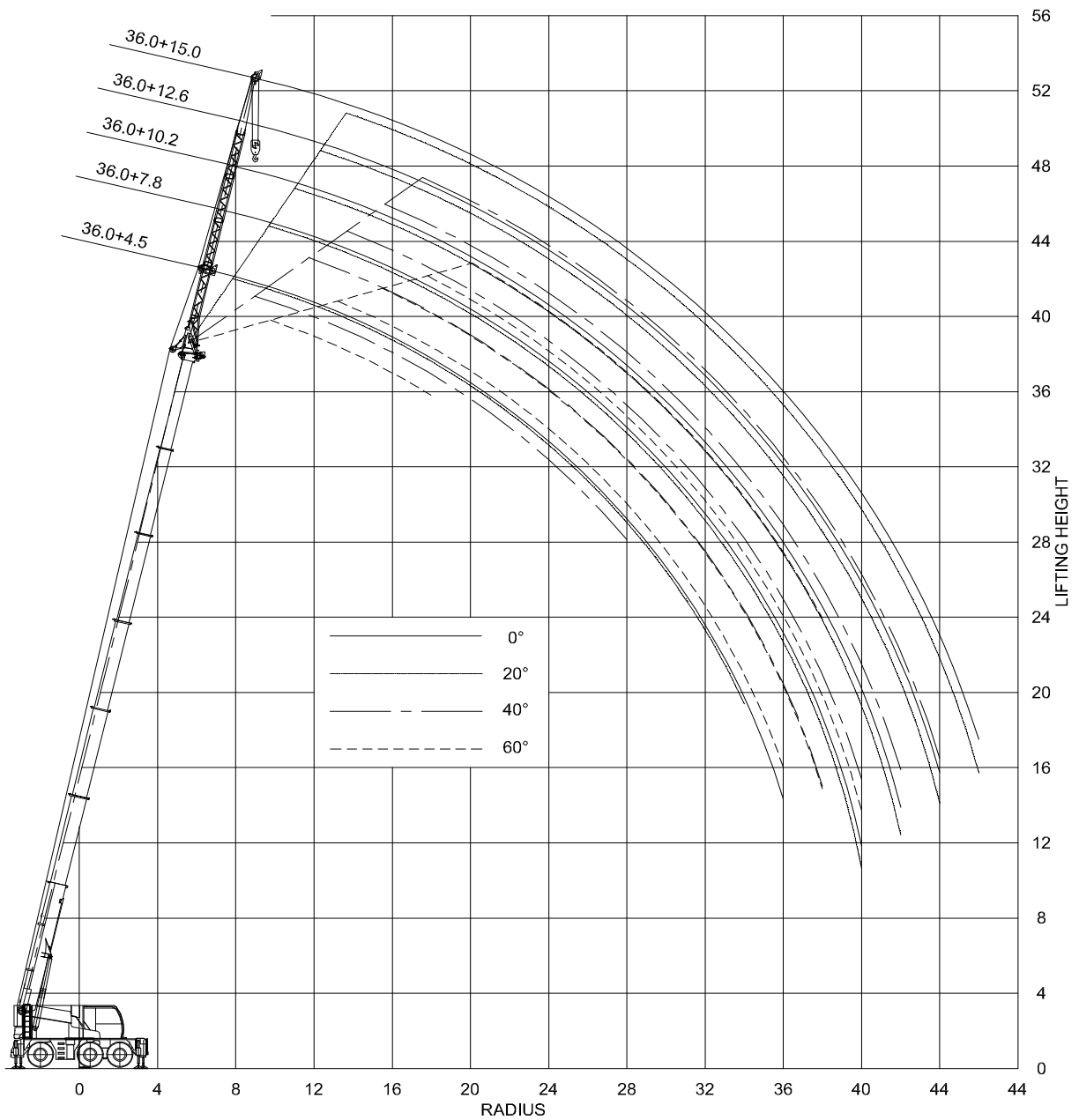


# LIEBHERR LTC1055-3.1 (SH)

Outrigger base: 6.26x6.26m

Ballast: 10.4t

Mainboom (Outrigger base 6.26x6.26)																							
Counterweight	Boomlength	Radius																					
		3	3.5	4	4.5	5	6	7	8	9	10	11	12	14	16	18	20	22	24	26	28	30	32
10.4	7.9	50	45.5	41.5	37																		
	10.2		44	42	37.5	34	28.1	23.5															
	12.6		41	40.5	37.5	34	28.2	23.8	20.4	18.1													
	14.9		39	39	36	33.5	28.1	23.7	20.7	18.2	16												
	17.2				34	32	28	24	20.7	18.1	16	14.3	12.6	9.9									
	19.6				32	31	28	23.9	20.4	18	15.8	14.2	12.5	10.2	8.3								
	21.9					28.4	27.6	25.4	22.8	20.2	17.7	15.6	13.9	12.2	9.5	7.7	6.9						
	24.3					24.8	23.9	21.6	19.7	17.9	16.3	14.9	13.7	12.5	9.8	8.1	6.9	5.9					
	26.6					21.3	20.9	19.8	18.3	16.8	15.4	14.1	13	11.8	9.6	8	6.7	5.9	5.1				
	29					18.4	18.1	17.2	16.2	15.2	14.3	13.4	12.5	11.5	9.3	7.7	6.7	5.7	5	4.4	3.7		
	31.3					15.4	15.3	14.8	14.2	13.5	12.8	12.1	11.4	10.7	9.3	7.8	6.5	5.7	4.9	4.2	3.7	3.2	
	33.7						12.6	12.4	12	11.5	11	10.6	10.1	9.6	8.7	7.7	6.4	5.6	4.8	4.1	3.6	3.1	2.7
	36							10.7	10.5	10.2	9.8	9.5	9.1	8.6	7.8	7.1	6.4	5.4	4.6	3.9	3.4	2.9	2.5
4.4	7.9	49	44	39	34.5																		
	10.2		44	39	35	31	25.5	21.4															
	12.6		41	39	35	31.5	25.6	21.6	18.7	15.2													
	14.9		39	38.5	35	31.5	25.9	22	18.8	15.3	12.8												
	17.2				34	31	25.8	21.7	18.4	15.3	12.8	11.1	9.3	7.2									
	19.6				32	31	25.7	21.1	17.4	14.8	13	11.4	9.7	7.7	6.2								
	21.9					28.4	27.6	24.4	19.7	16.4	13.9	12	10.7	9.4	7.6	6.2	5.1						
	24.3					24.8	23.9	21.5	18.5	16.2	13.9	12	10.8	9.6	7.5	6.2	5.1	4.3					
	26.6					21.3	20.9	19.7	17.7	15.1	13	11.8	10.6	9.3	7.5	6.1	5	4.2	3.6				
	29					18.4	18.1	17.2	16.2	14.4	12.6	11.1	10.1	9.1	7.3	6	4.9	4.1	3.5	3	2.4		
	31.3					15.4	15.3	14.8	14.2	13.4	12	10.6	9.6	8.5	7.2	5.9	4.8	4	3.3	2.8	2.4	2	
	33.7						12.6	12.4	12	11.5	11	10.3	9.4	8.5	6.9	5.7	4.7	3.8	3.2	2.7	2.2	1.9	1.5
	36							10.7	10.5	10.2	9.8	9.4	8.8	8.1	6.5	5.3	4.4	3.6	3	2.5	2	1.7	1.3





# LIEBHERR LTC1055-3.1 (SF)

Outrigger base: 6.26x6.26m  
 Offset: 0/20/40/60°  
 Ballast: 10.4t

Mainboom with fixed jib (Outrigger base 6.26x6.26)																														
Boomlength	JibLength	JibAngle	Radius																											
			3	3.5	4	4.5	5	6	7	8	9	10	11	12	14	16	18	20	22	24	26	28	30	32	34	36	38	42	46	
7.9	4.5	0	11.6	11	10.3	9.9	9.4	8.6	7.8	7.4	7.1																			
		20	9.2	8.9	8.5	8.2	7.8	7.5	7.2	7	7																			
		40	7.8	7.6	7.5	7.3	7.2	6.9	6.8																					
		60		6.6	6.4	6.3	6.2	6.1																						
	7.8	0	7.1	6.6	6.1	5.7	5.4	4.9	4.4	4	3.6	3.3	3.1	2.9																
		20	5.1	4.9	4.7	4.4	4.2	3.8	3.5	3.3	3.1	3	2.9	2.8																
		40					3.4	3.3	3.1	3	2.9	2.9	2.9	2.9																
		60						2.8	2.8	2.8	2.8	2.8	2.8	2.8																
	10.2	0	5.4	5.1	4.8	4.5	4.2	3.7	3.2	3	2.7	2.5	2.4	2.2	2															
		20			3.5	3.4	3.2	3	2.8	2.6	2.4	2.3	2.2	2.1	1.9															
		40							2.3	2.2	2.1	2	2	1.9	1.9															
		60								2.3	2.2	2.1	2	1.9	1.9															
12.6	0	4.5	4.3	4.1	3.8	3.6	3.1	2.8	2.5	2.3	2.2	2	1.9	1.6																
	20					2.4	2.2	2.1	2	1.8	1.7	1.6	1.5	1.4	1.4															
	40									1.7	1.6	1.6	1.5	1.4	1.4															
	60										1.4	1.3																		
15	0		3.4	3.2	3	2.9	2.6	2.3	2.1	2	1.8	1.7	1.6	1.4	1.2	1.1														
	20								1.8	1.6	1.5	1.5	1.4	1.2	1.1	1														
	40													1.1	1	1														
	60														1	1														
26.6	4.5	0			12.7	12.5	11.9	11.4	10.9	10.5	10.1	9.8	9.4	8.7	7.6	6.3	5.4	4.7	4.2	3.7	3.2									
		20					9.1	8.9	8.6	8.2	7.9	7.8	7.6	7.3	7	6.4	5.5	4.8	4.2	3.8										
		40						7.4	7.3	7.2	7.1	7	6.9	6.7	6.6	6.4	6.4	5.5	4.9											
		60							6.3	6.2	6.2	6.2	6.1	6.1																
	7.8	0				8	7.8	7.3	6.9	6.4	6.1	5.8	5.5	5.2	4.7	4.3	4	3.6	3.3	3.1	3	2.9	2.8							
		20						4.6	4.5	4.3	4.1	3.9	3.7	3.5	3.3	3.2	3.1	3	2.9	2.8	2.8	2.8	2.8							
		40								3.2	3.2	3.2	3.1	3	2.9	2.8	2.8	2.8	2.8	2.8	2.8	2.8	2.7							
		60									3.2	3.2	3.2	3.1	3	2.7	2.7	2.7	2.7	2.7	2.7	2.7	2.7							
	10.2	0				5.9	5.8	5.4	5.1	4.8	4.5	4.2	4	3.7	3.3	3	2.8	2.6	2.4	2.2	2.1	2	1.9	1.9						
		20						3.1	3	2.9	2.8	2.7	2.5	2.4	2.3	2.2	2.1	2	1.9	1.9	1.9	1.9	1.9	1.9						
		40											2.1	2.1	2	1.9	1.9	1.9	1.9	1.9	1.9	1.9	1.9	1.8						
		60												1.8	1.8	1.8	1.8	1.8	1.8	1.8	1.8	1.8	1.8	1.8						
12.6	0				4.6	4.5	4.2	3.8	3.6	3.4	3.2	3.1	2.9	2.6	2.4	2.2	2	1.9	1.8	1.7	1.6	1.5	1.4	1.4	1.4	1.4	1.4			
	20										2.2	2.2	2.1	1.9	1.8	1.7	1.6	1.6	1.5	1.4	1.4	1.4	1.3	1.3	1.3	1.3	1.3			
	40													1.6	1.5	1.4	1.4	1.4	1.3	1.3	1.3	1.3	1.3	1.3	1.3	1.3	1.3			
	60														1.3	1.3	1.3	1.3	1.3	1.3	1.3	1.3	1.3	1.3	1.3	1.3	1.3			
15	0					3.1	3	2.8	2.7	2.6	2.5	2.3	2.1	1.9	1.8	1.6	1.5	1.4	1.3	1.2	1.2	1.1	1	1	1	1	1			
	20												1.5	1.4	1.3	1.3	1.2	1.1	1.1	1.1	1	1	1	1	1	1	1			
	40													1.1	1.1	1.1	1	1	1	1	1	1	1	1	1	1	1			
	60														1	0.9	0.9	0.9	0.9	0.9	0.9	0.9	0.9	0.9	0.9	0.9	0.9			
36	4.5	0							7.4	7.3	7.1	6.9	6.7	6.3	5.8	5.4	5	4.5	3.8	3.2	2.7	2.3	1.9	1.6	1.4					
		20							7.4	7.3	7.1	6.9	6.6	6.1	5.7	5.3	4.9	4.6	3.9	3.3	2.8	2.4	2	1.7						
		40									6.5	6.5	6.4	6.1	5.6	5.2	4.9	4.5	4	3.4	2.9									
		60									6.1	6.1	6.1	6	5.7	5.3														
	7.8	0						5.6	5.4	5.3	5.1	5	4.8	4.5	4.2	3.8	3.6	3.5	3.3	3.1	2.8	2.4	2	1.7	1.5	1.2				
		20								3.9	3.8	3.7	3.6	3.5	3.3	3.2	3.1	3	2.9	2.9	2.8	2.5	2.2	1.8	1.5	1.3				
		40										3	2.9	2.9	2.8	2.7	2.7	2.7	2.7	2.7	2.6	2.2	1.9	1.5	1.3					
		60											2.7	2.7	2.7	2.7	2.7	2.7	2.7	2.7	2.6	2.2	1.8	1.5						
	10.2	0						4.1	4	3.9	3.7	3.6	3.5	3.3	3.1	2.9	2.7	2.6	2.5	2.3	2.2	2.1	2	1.8	1.5	1.3	0.9			
		20									2.8	2.7	2.6	2.5	2.4	2.3	2.2	2.1	2.1	2	1.9	1.9	1.8	1.6	1.4	0.9				
		40												2	2	1.9	1.9	1.9	1.8	1.8	1.8	1.8	1.8	1.8	1.7	1.4				
		60													1.8	1.8	1.8	1.8	1.8	1.8	1.8	1.8	1.8	1.8	1.8	1.6	1.3			
12.6	0						3.2	3.1	3	2.9	2.8	2.7	2.6	2.4	2.2	2.1	2	1.9	1.8	1.7	1.6	1.6	1.5	1.4	1.3	0.9				
	20										2	1.9	1.8	1.7	1.6	1.5	1.4	1.4	1.4	1.4	1.4	1.4	1.3	1.3	1.3	1				
	40													1.5	1.4	1.4	1.4	1.3	1.3	1.3	1.3	1.3	1.3	1.3	1.3	1.3	1			
	60														1.3	1.3	1.3	1.3	1.3	1.3	1.3	1.3	1.3	1.3	1.3	1.3	1.3	1		
15	0								2.4	2.3	2.3	2.2	2	1.9	1.8	1.7	1.6	1.5	1.4	1.3	1.3	1.2	1.2	1.1	1.1	0.9	0.6			
	20													1.4	1.4	1.3	1.2	1.2	1.1	1.1	1.1	1	1	1	1	0.9	0.7			
	40															1.1	1	1	1	1	1	0.9	0.9	0.9	0.9	0.9	0.9			
	60																0.9	0.9	0.9	0.9	0.9	0.9	0.9	0.9	0.9	0.9	0.9			