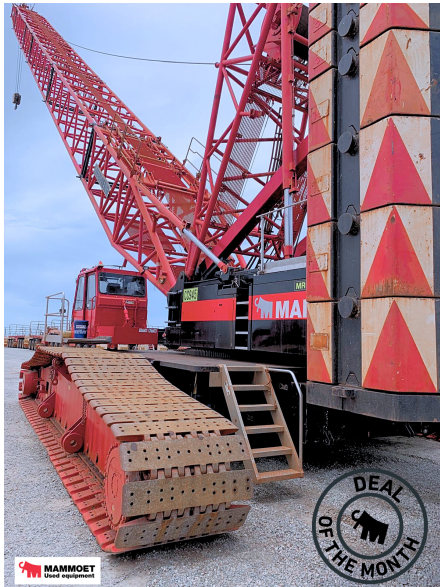


Crawlers

LIEBHERR LR 1350-1 (SOLD)



General specifications

Reference Number	1945
Brand	Liebherr
Model	Crawler crane
Capacity	350 Tons
Year of Construction	2011
Location	Port Hedland
Country	Australia
CE	Yes

Carrier structure

Engine Emission	Tier 2
-----------------	--------

Remarks

All our equipment is offered on an 'as is, where is' basis and subject to availability. All prices are excluding commissions, accessories as outrigger mats and cameras, and any taxes: such as WHT, VAT and other transactional based taxes, if any. Offer is conform our General Terms and Conditions of Sales.

Upper structure

Mainboom	72 Meter
Jib	72 Meter
Engine Brand	Liebherr D926 TI-E A4
Hookblocks	250 Tons 125 Tons 50 Tons
Crane Counterweight	163 Tons
Winches	4
Workhours Upper	12950 Hours

Main boom 72mtr, luffing jib 72mtr, Derrick mast 27mtr, 4 winches, hook bock 250t 7 sheave + hook block 125t 3 sheave + 50t 1 sheave, counterweight 163t

Call us at: +31 (0) (0) 88 650 2310

Email us at: usedequipment@mammoet.com